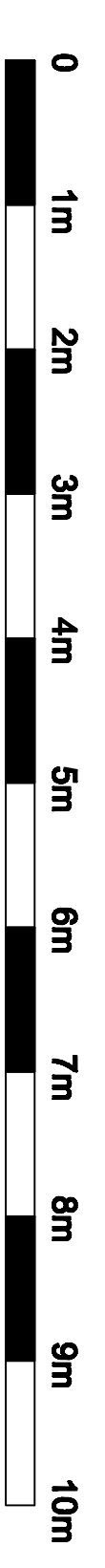
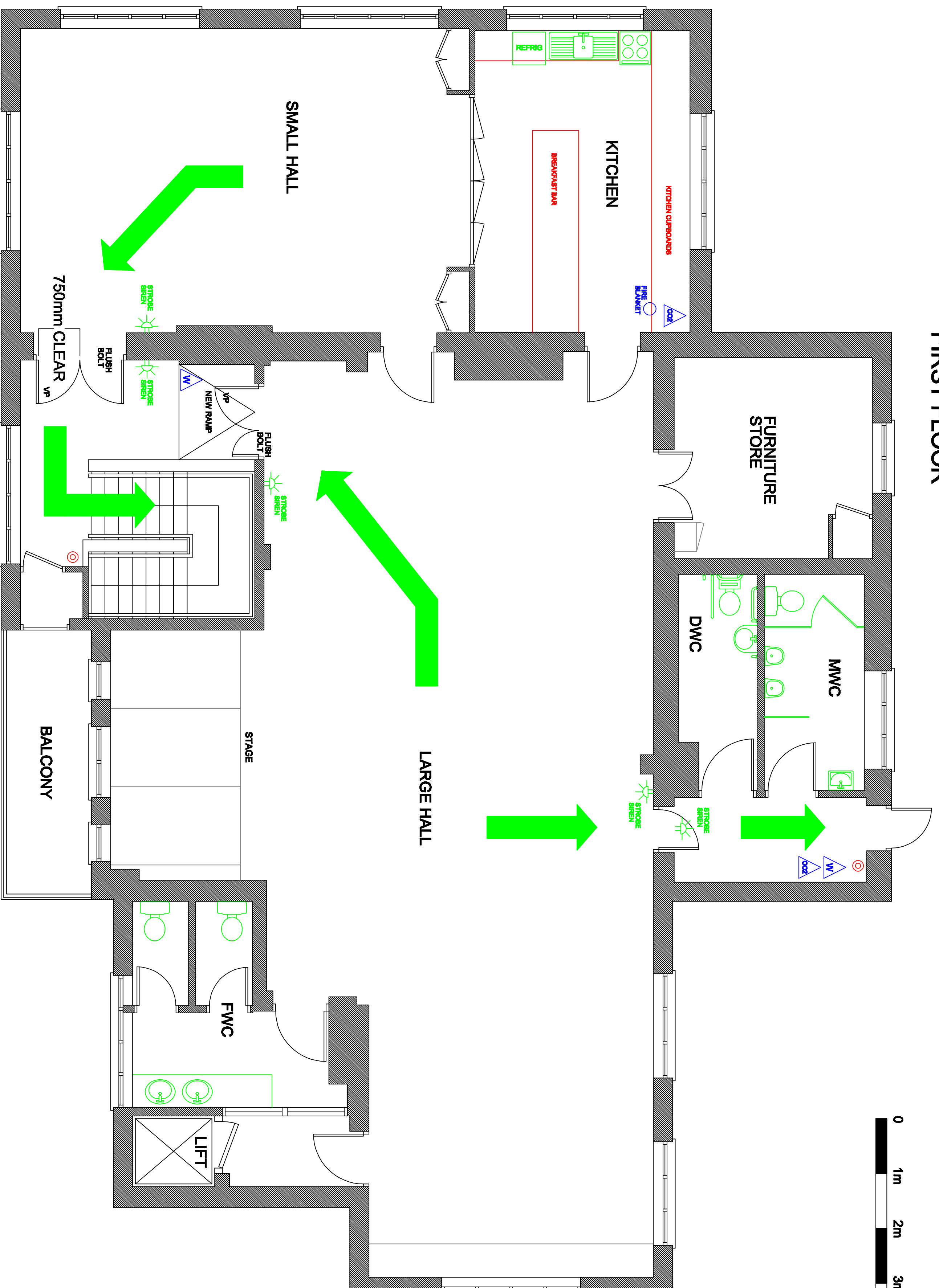


FIRST FLOOR



KEY - EXISTING SERVICES

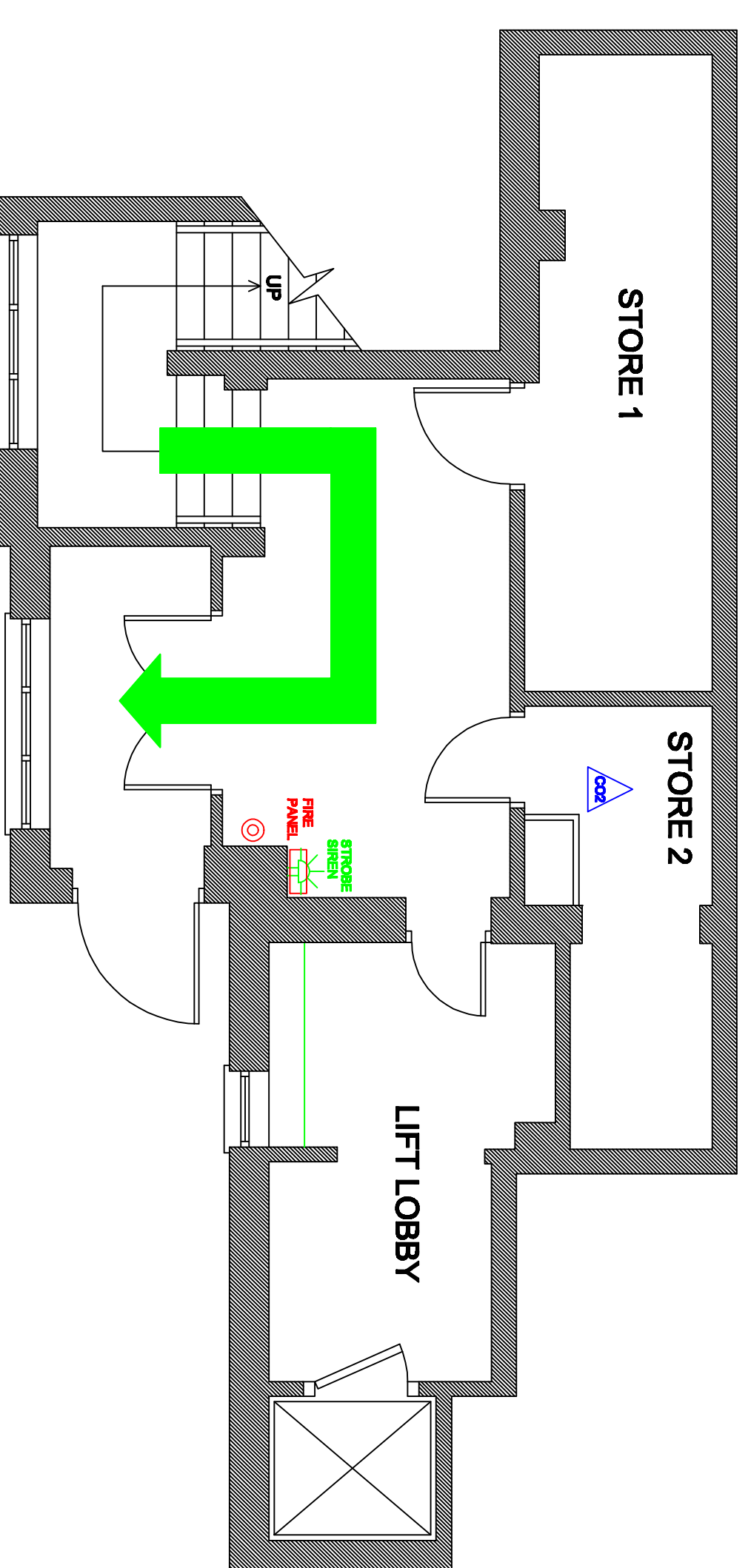
- CEILING MOUNTED FLUORESCENT STRIP LIGHT
- NON-MAINTAINED EMERGENCY BRICK LIGHT
- FLUORESCENT CEILING MOUNTED BUTTON LIGHT FITTING
- PENDENT LIGHT FITTING
- SMOKE DETECTOR
- FIRE ALARM CALL POINT
- LIGHT SWITCH
- FIRE ALARM BELL
- SWITCHED SPUR
- DOUBLE SWITCHED SOCKET OUTLET
- SINGLE SWITCHED SOCKET OUTLET
- WATER FILLED FIRE EXTINGUISHER
- CARBON DIOXIDE FILLED FIRE EXTINGUISHER

KEY - NEW SERVICES

- CIRCULAR SINGLE TUBE LUMINAIRE FITTING - SSW LAMPS
- FLUORESCENT DOWNLIGHTER

ALL NEW AND EXISTING LIGHT FITTINGS TO BE CONTROLLED BY PIR SENSORS EXCLUDING STORE 1, 2, TONCH AND FIRST FLOOR LIFT LOBBY.

GROUND FLOOR ENTRANCE



CLIENT	ETON WICK VILLAGE HALL	DRAWING NO.	EW-1-FIRE
PROJECT	ETON WICK ROAD, BERRISHIRE SL4 6LT	SCALE	1:50
DRAWING FIRE ESCAPE PLAN			
DATE	01/02/11	DRAWN BY	MEE
		REV.	
COPYRIGHT 2011			